



USER'S GUIDE FOR VERSION 1.0

1. INSTALLATION FROM CD

- a. Place the CD-ROM in your CD-ROM Drive
- b. Double-Click My Computer
- c. Click on your CD ROM Drive
- d. Run Setup.exe
- e.

2. INSTALLATION FROM DOWNLOAD

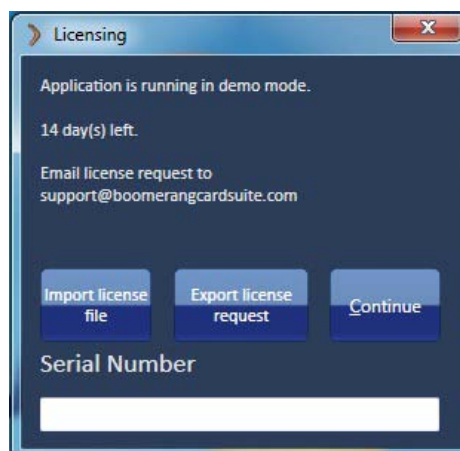
- a. Extract the Zip File
- b. Run Setup.exe

3. LICENSING

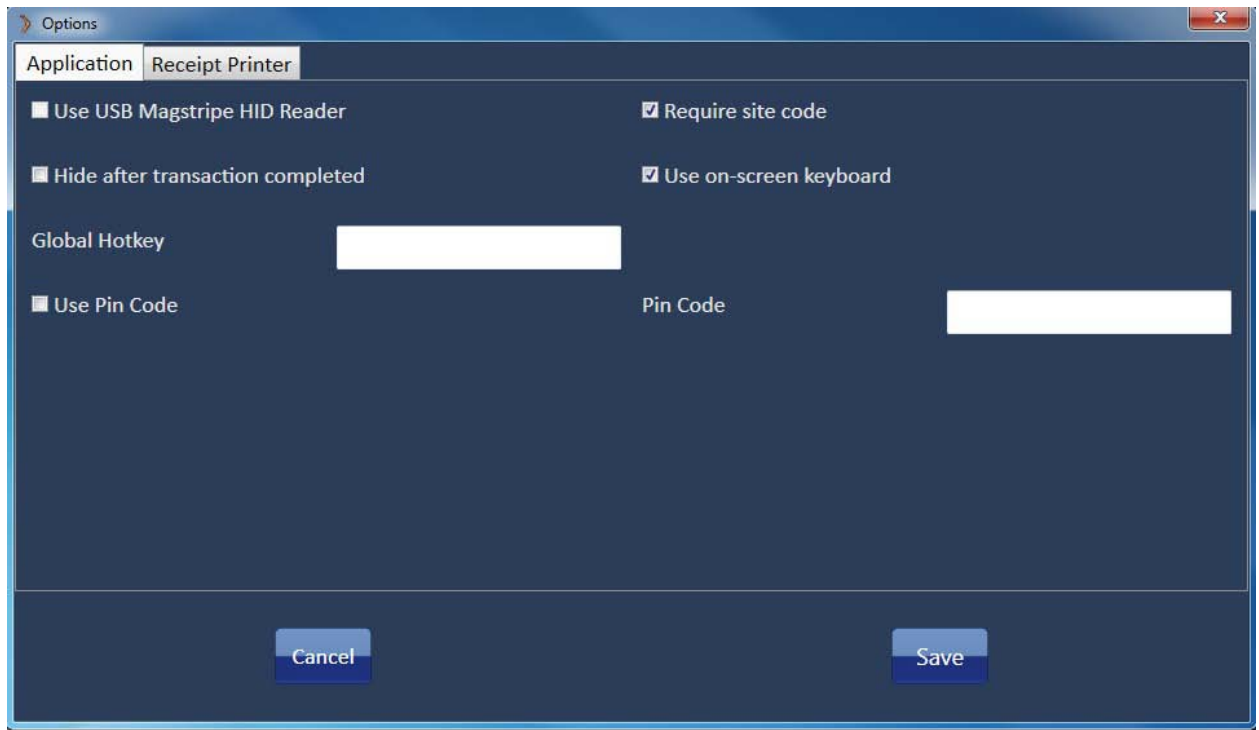
The Software will run in a *14 day Demo Mode*. To Run in Demo Mode click Continue.

To activate your license:

- a. *Purchase a License and obtain a Serial number.*
- b. *Click Export License – Save the file – email the file to support@boomerangcardsuite.com.*
- c. *Click Import License File – Import the File you receive from support.*



4. **CONFIGURATION**



Click **Options – Settings**

Use HID Magstripe Reader – Not Currently in use/Needed

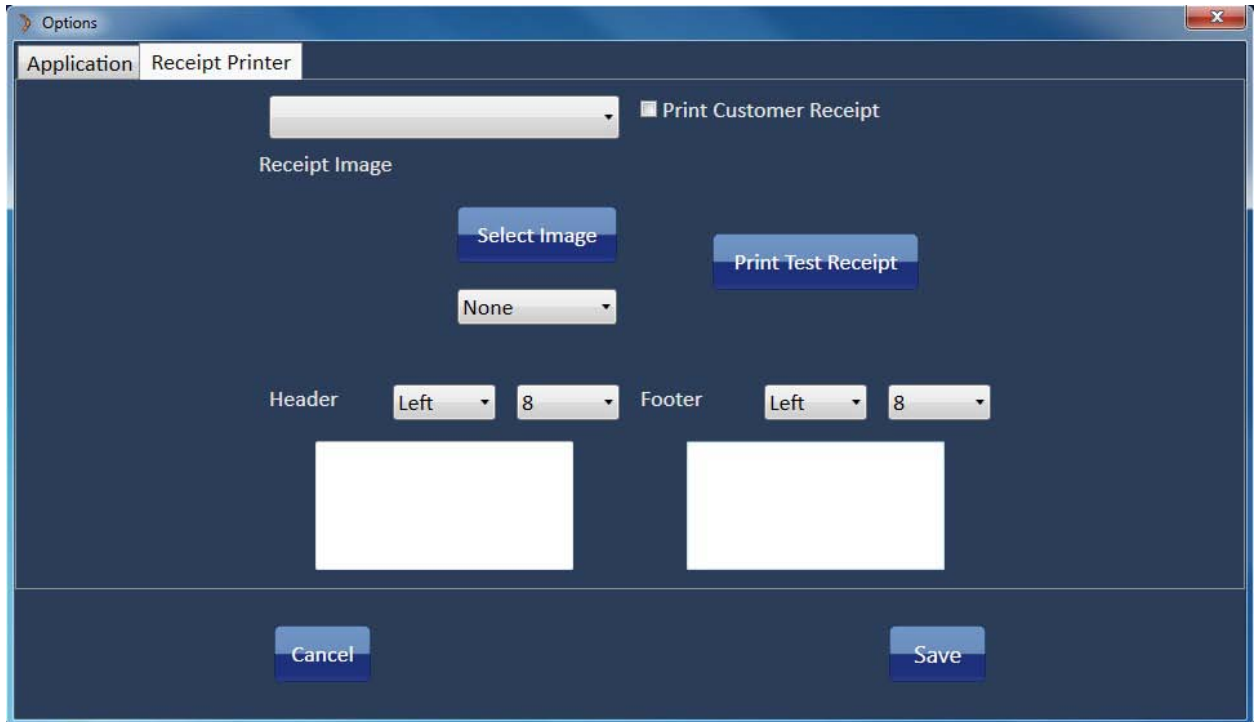
Require Site Code – Requires a preprogrammed id number to be present at the start of the magstripe.

Hide after transaction completed – This will minimize the program after completing a transaction.

Use on-screen keyboard – This will allow a virtual keyboard to be used for any input screens.

Global Hotkey – Ability to assign a hotkey that will bring focus of gift to front of screen.

Use Pin Code – Enabled, this is required to deduct money from a card and to access the settings screen.



5. **PRINTER SETUP**

Receipt Printer – Choose a Local Printer to print receipts to.

Print Customer Receipt – Prints a second copy for customers.

Receipt Image – ability to choose a custom graphic for the receipt.

Print Test Receipt – Allows the receipt to be printed for testing purposes.

Header - Allows custom information at the top of the receipt.

Footer – Allows custom information at the bottom of the receipt.

6. REPORTS

View Transaction Report

Date

From 4/ 1/2010 To 4/ 1/2010

12:00:00 AM 11:59:59 PM

Card Number

OK Cancel

Click the Report tab to Run Reports by Date.

Enter a card number to search by ID

Sample Report

Report

Transaction Report

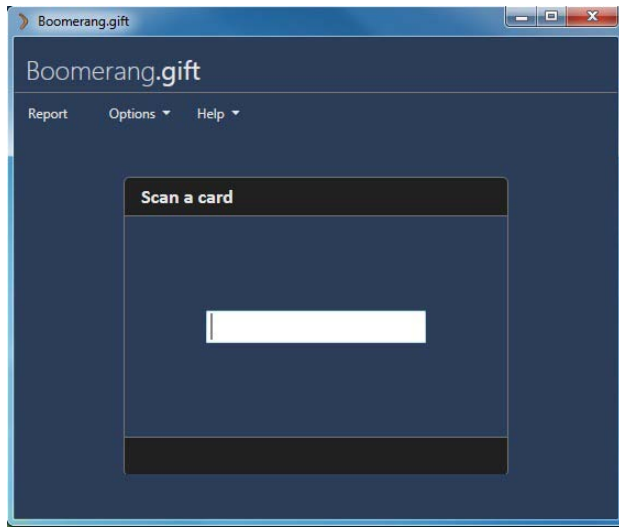
4/2/2010 12:00:00 AM — 4/2/2010 11:59:59 PM

Card Number	Notes	Date	Transaction Value	Card Balance
123456789		4/2/2010 8:20:13 AM	\$0.00	\$23.00
123456789		4/2/2010 8:21:11 AM	(\$1.00)	\$22.00
			Debit:	(\$1.00)
			Credit:	\$0.00
			Total:	(\$1.00)

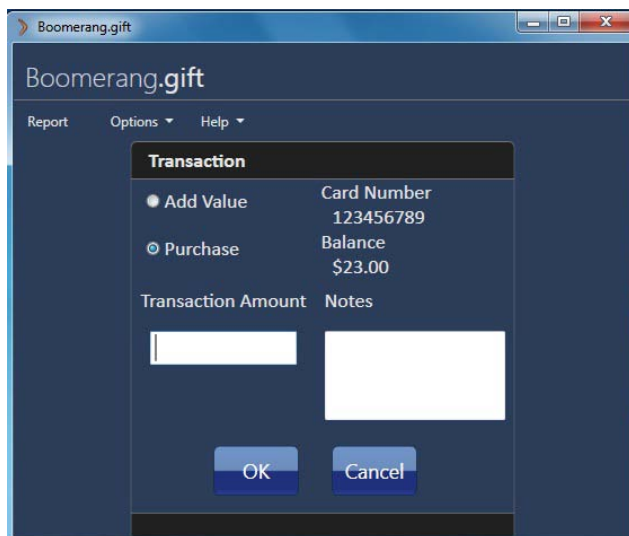
www.boomerangcardsuite.com

1 of 1

7. OPERATION



The Card can be swiped thru a magstripe reader or manually typed in.



Adding Value to a Card

Swipe an ID or Key in a Number to bring up the Transaction Screen

Select the Add Value Radio Dial Button

Key in an amount under Transaction Amount. A Note field is Optional

Click Ok – The Default Pin Key is 1234.

Removing Value from a Card.

Swipe an ID or Key in a Number to bring up the Transaction Screen

Select the Purchase Radio Dial Button

Key in an amount under Transaction Amount. A Note field is Optional

Click OK